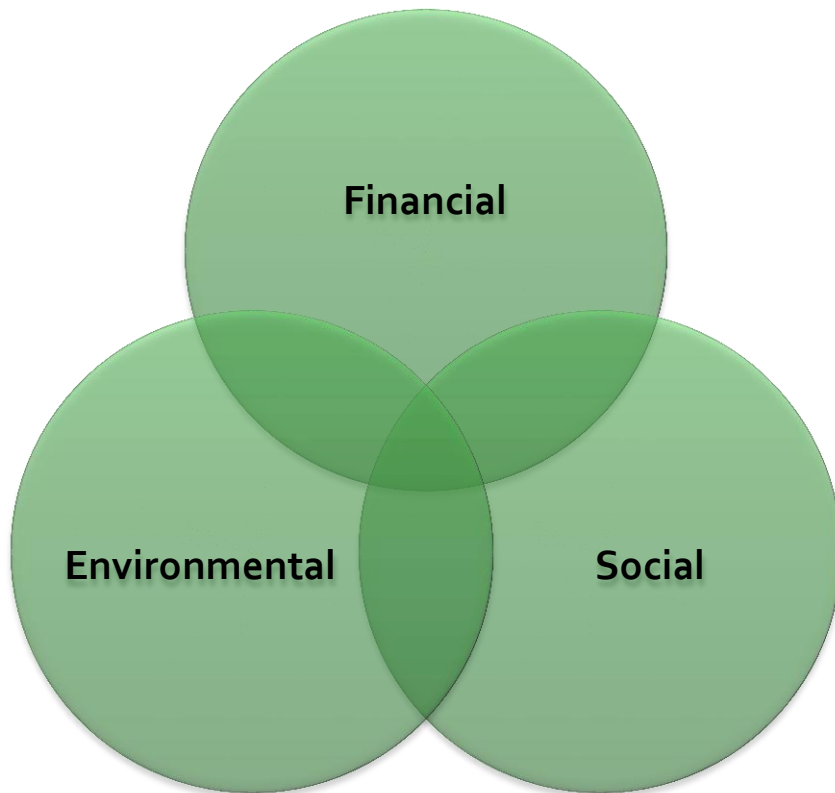


Emily Yee Clare

Residences Anti-Oppression Programme

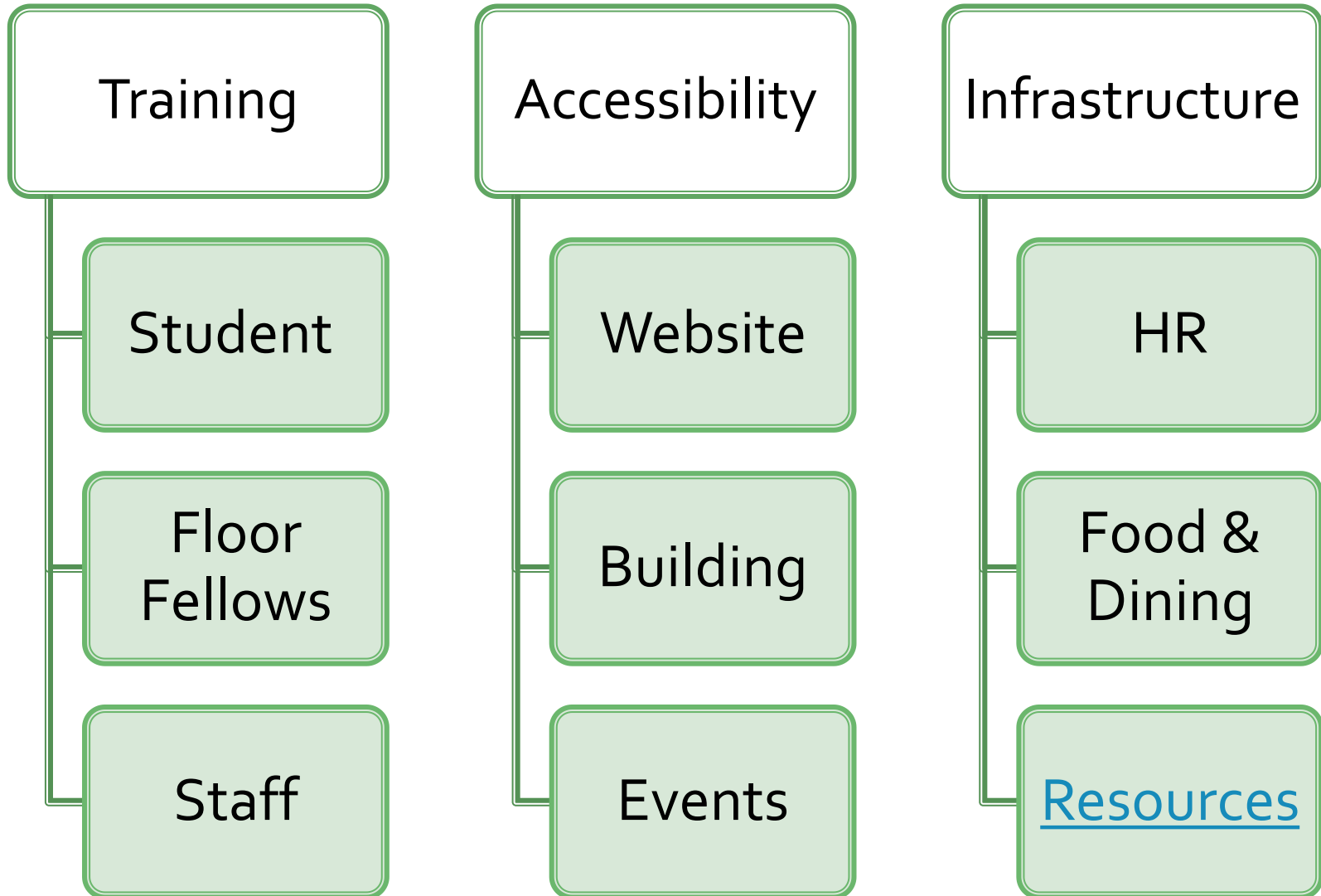
Sustainability & Anti-Oppression



2010 Residences and Student Housing Strategic Plan

“We must develop a welcoming and supportive place for all wanting to be successful students and positive community members. To do this, we must suspend the assumption that we are already successful in this effort and utilize assessment and continuous self-evaluation to gain a true picture.”

Areas of Development



Thank You

emily.clare@mcgill.ca

514.867.7377