



**QUEBEC STUDENT  
UNION**

## WHY A PROVINCIAL STUDENT ASSOCIATION?

- Higher-education is under provincial jurisdiction
- Few local associations can meaningfully affect government policy on their own
- Local student associations have a number of common interests & values
- The size, resources and expertise of a province-wide association gives it credibility and weight

## A BRIEF HISTORY OF THE QUÉBEC STUDENT UNION

### Spring 2015

Many independent associations  
Preliminary talks

### Fall 2015 & Winter 2016

Affiliation processes  
- 73 000 individual members from 6  
different associations across Quebec

### Summer 2015

Coordinating committee  
By-Laws  
Political positions

## WHY THE QUÉBEC STUDENT UNION?

### Solidarity

- Welcoming to all
- Condemns all discrimination

### Transparency & Democracy

- Complete access to information
- Consensus within governing bodies
- Accountability

### Collegiality

- Respect and openness to differences

### Sovereignty

- Full autonomy of member associations
- Respect of their internal regulations & governing bodies

### Credibility

- Concrete objectives
- Research, advocacy & mobilization

## Reaching consensus: The double majority system

**One vote per  
association**



**Semi-  
proportional**

**How it works**

1 vote, no matter the size

Protects the  
interest of  
associations

More sustainable  
(small won't leave)

**How it works**

Approval by associations  
representing 40% of the  
members

Protects the interest  
of the majority of  
individual students

More sustainable  
(large won't leave)

# FROM WRITTEN RESOLUTIONS TO CONCRETE RESULTS

## CHANGE

**1** Research

**2** Press relation

**3** Direct advocacy

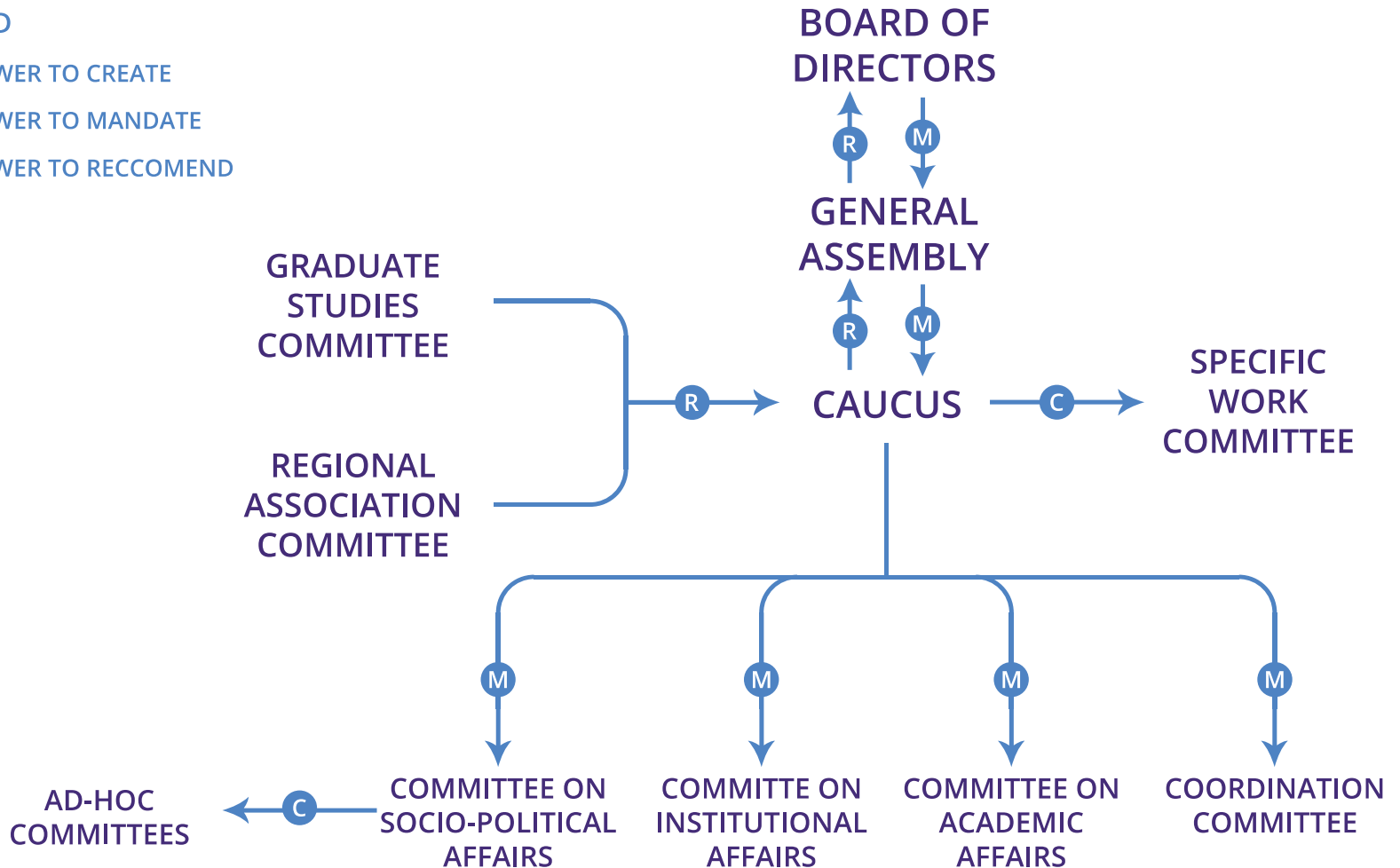
**4** Networks & allies in civil society

**5** Mobilization

# DEFEND STUDENT VALUES AND INTERESTS

## LEGEND

- C** POWER TO CREATE
- M** POWER TO MANDATE
- R** POWER TO RECCOMEND



## DEFEND STUDENT VALUES AND INTERESTS

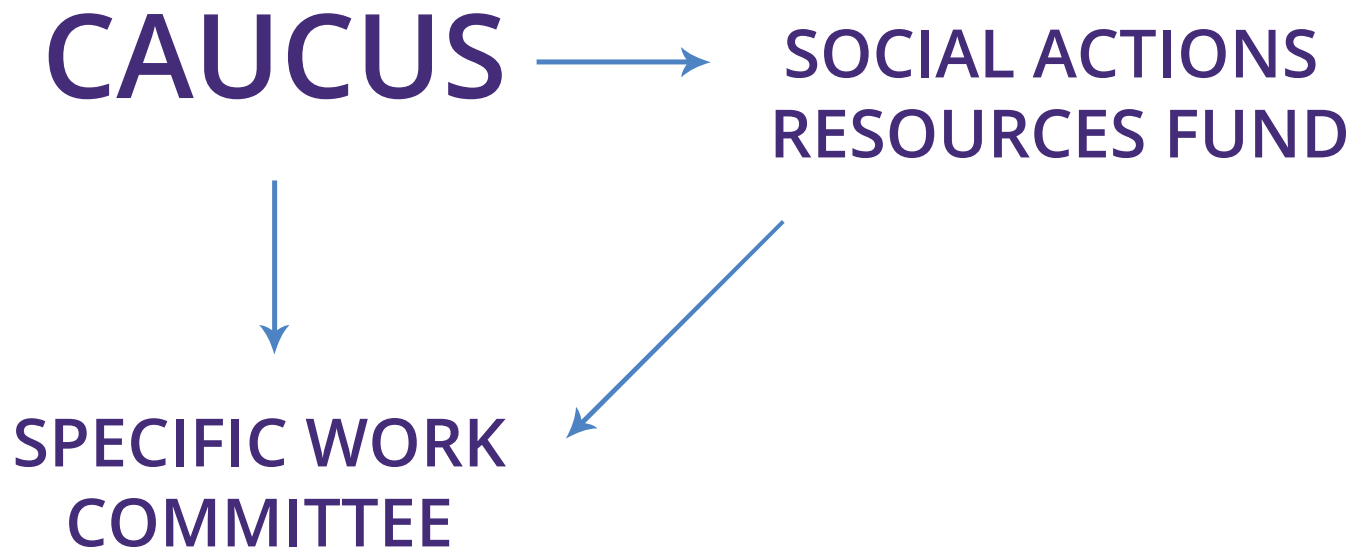




## SOCIAL ACTIONS RESOURCES FUND

### SPECIFIC ISSUES

- MENTAL HEALTH
- ENVIRONMENTAL
- LGBT, WOMEN'S CONSENT



## SPECIFIC ISSUES COMMITTEE ADVANTAGES

This money can be used for:

**1** Campaign coordinator

**2** Researcher

**3** Campaign material

**4** Website

Lower expenses

Efficient use  
of time

Greater Scope

**TURNING COMMON INTERESTS INTO CONCRETE RESULT**



**QUEBEC STUDENT  
UNION**