



REPORT OF THE PRESIDENT TO FALL 2016 GA

Ben Ger, President

What Does the President Do?

GOVERNANCE

Responsibilities

- Governance Document Knowledge & Maintenance
- Councillor Orientation & Training
- SSMU Level Policy Development

Relevant Staff

- Speaker
- Parliamentarian
- Recording Secretary
- Secretary General

Committees

- Steering Committee

LEADERSHIP & SUPPORT

Responsibilities

- Office Dynamics
- Institutional Knowledge
- Faculty Relations

Relevant Staff

- Secretary General

Committees

- Executive Committee
- Presidents Round Table
- HR Committee

ADVOCACY & REPRESENTATION

Responsibilities

- Senate & Committee Representation
- Board of Governors & Committee Representation

Relevant Staff

- Secretary General

Committees

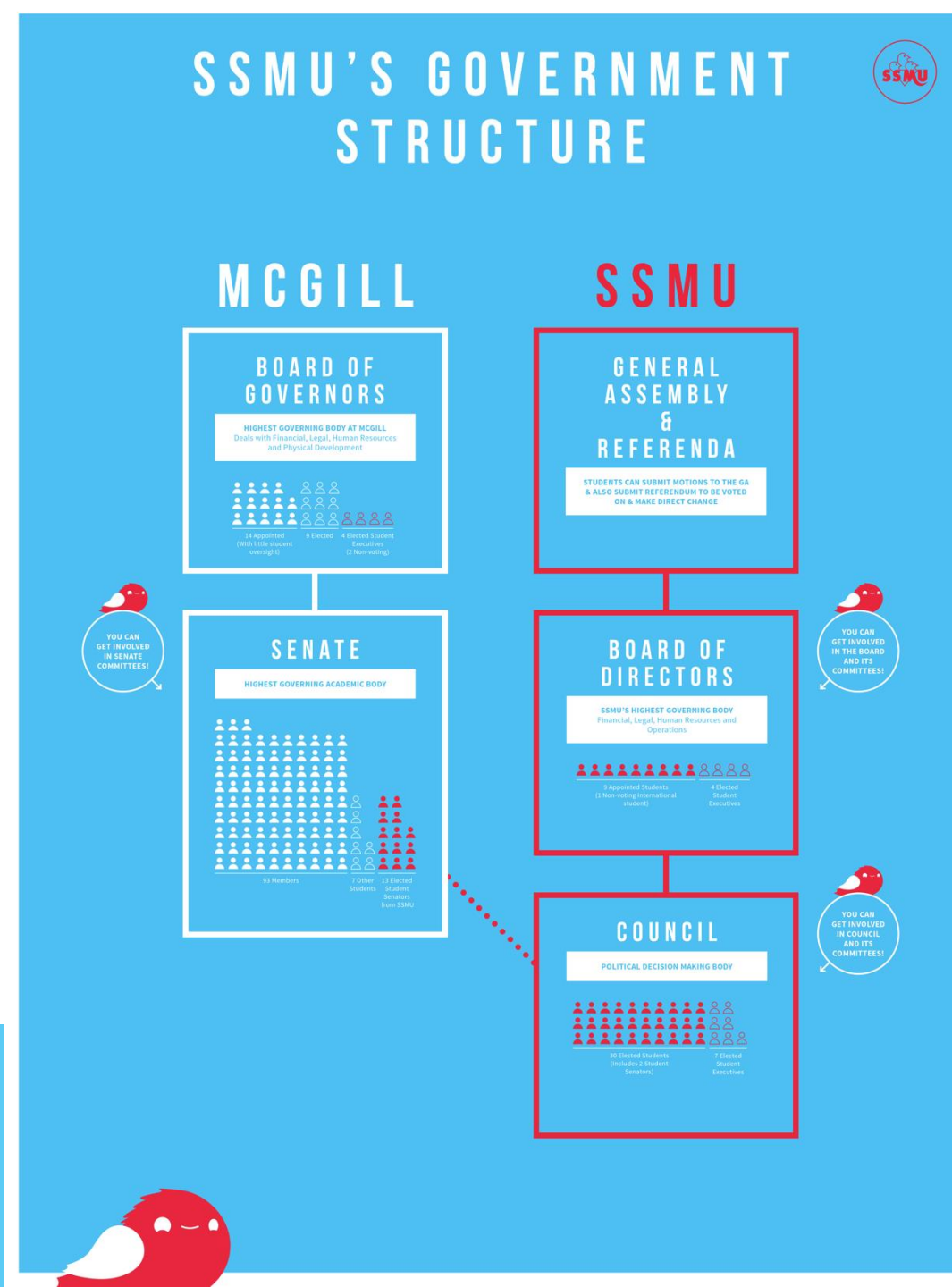
- Senate Caucus
- Board of Governance Caucus

Governance

- Policies & Plans
 - Free Menstrual Hygiene Products Policy
 - Conflict of Interest Policy
 - Ethical Expenditures
 - Equitable Hiring Practices
- Equitable Governance Reform
 - Report of Equitable Governance Practices
 - Striking of the Committee
- Political Literacy & Accessibility
 - Student Executives at McGill Learning, Engaging, Sharing and Strategizing (SEAMLESS) Summit
 - Organigrams & Videos
 - Larger Space in Frosh
 - Simplified Governance Documents & Cutting Unnecessary Ones



Students' Society of McGill University
3600 McTavish Street, Suite 1200, Montréal, Québec



Advocacy & Representation

- Joint Board-Senate Committee on Equity
 - Accessibility Checklist for Events on Campus
- Subcommittee on Student Affairs Policy (SSAP)
 - Mental Health Training as a Requirement for Tenure
- Board of Governors (BoG) Reform
 - Board Best Practices Report
 - Pre-BoG Meeting for Elected Members (BoG Caucus)



Leadership & Support

- Presidents' Round Table
 - Working Together to Distribute Mental Health 101 Information to Faculty Councils
- HR
 - Working closely with VP Finance, General Manager and HR Advisor to ensure that the office continues to function at a higher quality of service with a less resources to help with that.
 - Monthly Check In's with Staff and Executives



Questi ons?

514-398-1801, president@ssmu.mcgill.ca

Office Hours: Tuesdays (2pm-3pm), and Wednesdays (10am-12pm)



Students' Society of McGill University
3600 McTavish Street, Suite 1200, Montréal, Québec